

COMMANDER JOINT TASK FORCE COMMAND PHILOSOPHY, ROLES AND FUNCTIONS, VISION, MISSION, THEME, DIRECTIVES AND COMMAND INTENT

**Brigadier General M.D.Gadai, CM, MSD, msdss,
psc, FIC.**



2022/2023 FY to 2027



TABLE OF CONTENT

| SRL | Description | Page |
|-----|--|---------|
| 01. | Commander JTF Command Philosophy. | 1 - 5 |
| 02. | JFTC's Role & Functions and Command Directives | 6 - 11 |
| 03. | JFTC Vision, Mission statement and Theme. | 12 |
| 04. | Commander JFT Directive & Intend | 13 - 18 |
| 05. | Conclusion | 19 |



Commander JTFC Command Philosophy

Brigadier General M.D. Gadai, CM, MSD, msdss, psc. FIC



My Command Philosophy for this year and years to come will always be guided by our constitutional role, our Defense and Security Policies, RFMF Strategic Plan 2022-2027, and CRFMF's Command Intent. My Command Philosophy is designed to guide and direct all members of the RFMF Joint Task Force Command (JTFC) to a just and a right direction. JTFC will be a cohesive Unit comprised of God fearing, professionally competent, morally strong, physically fit soldiers, all dedicated to our mission with a reputation of working cohesively, balanced excellence, integrity and with enthusiasm.

I expect everyone to dedicate themselves to professional and personal excellence and to be aggressive and enthusiastic in the performance of their duties. Moral Courage and moral character are essential to my Command Philosophy. **You can never be wrong by always doing what is right.** The key to our success is to put ALMIGHTY GOD before everything, service before self, initiative, discipline, motivation, teamwork and always enforcing the RFMF high standards.

I expect the following principles to be the foundation of our high achievements and success:

ALMIGHTY GOD. It is extremely important that whatever we do as a cohesive unit, we will always put Almighty God first than anything else. I firmly believe that this will be the essence and cornerstone in our strive in achieving our JTFC Theme which is **“To effectively and efficiently postured for any contingency (s)”**.

Leadership. COMDs at all level must **lead from the front** and always **‘walk the talk’**.



Engaged leadership will be the hallmark of our Joint Task Force Command. We must know how to take care of our soldiers, families and those who rely on us. Trust is essential to effective leadership; trust, but verify. Without this, we will not be able to successfully accomplish our mission.

Mission.

We will achieve our mission with resilience and excellence. We will provide operational, training, logistical, administrative support to our soldiers in order to ensure the effective and efficient functioning of our Joint Task Force Command units and the RFMF as a whole.

People.

The coming years will be a very critical to the JTFC, as it will transition from to a



more agile, combat effective, professional and a smart joint force ready to face any perceived threats but most importantly to protect the wellbeing of all Fijians. It is important that whatever we do we will care, nurture, serve, secure and safeguard our very own people every time and all the time. Our soldiers, families and all Fijians are the most important element in my Command Philosophy.

Integrity.

Integrity forms the basis of our individual and collective reputation and how others view and trust us. Ultimately, integrity is the steel that will bond us together when we face crisis or hardships. We cannot succeed as a cohesive unit without a common commitment to a high standard of integrity and moral character.

Family.

One of my biggest challenges within the RFMF is the way we collectively manage some of our family issues. This has really consumed our professional time, energy and our resources. If you take good care of your family, your family will definitely look after you. Have quality time with your family because a strong family reflects a strong Unit and a strong Unit reflects a strong Military and a strong Military reflects a strong Nation. So by all means take very good care of your family, as this is one of the RFMF core values.

Balance and Consistency.

I will always emphasize a balanced and consistent approach to life. Family, work, fitness and education and social obligations must all take on proper proportions in our daily lives. Only by being balanced and consistent can we be mentally, morally, spiritually and physically ready to meet our challenges as infantry soldiers. Too much or too little attention paid to any one of these core elements will ultimately degrade and compromise our effectiveness and resilience.

Standards.

We will always maintain and enforce the highest standards of performance and conduct that make us as professional RFMF infantry soldiers. We lead and train soldiers to the highest standard, pure and simple (professional/technical competency, physical fitness, respect for others, adherence to RFMF rules and regulations, etc). This gives our soldiers the background to face any challenge in any operational environment and situations.



CJTFC's EXPECTATIONS

- Maintain a high standard of discipline and physical fitness;
- Must have the moral courage and moral character to effectively address issues and indiscipline in a timely manner;
- Train aggressively, systematically and with a purpose, while preserving the Unit's integrity;
- Act as a mentor and a role model. We will always set high standards and lead by example;
- Set a personal example of integrity, readiness and accomplishments.
Never compromise the RFMF core values (The will to win, Dedication to Duty, Integrity, Teamwork, Courage and Family) and ethos (Dina, Dodonu, Savasava):
- Be competent in basic military skills.
- Strong and effective relationships provide the foundation of how we do business with each other, within the staffs and with outside agencies or commands;
- Fix the problem and just don't sweep it under the carpet. Deal with it effectively and professionally;
- Expect greatness through dedication and selfless service. Plan with details in mind;
- Make safety an active component of everything we do. It is not a standalone program and stems from the mindset of being professional and deliberate in everything that we do both on and off-duty;
- Hold each other accountable for behavior 24/7. Whenever there are two or more soldiers present, the senior one should be in charge; and
- Be enthusiastic, simple and having fun. We do this by doing the hard and little things well, timely and justly.



We must preserve the spiritual health of our Joint Task Force Command. Guard against things that may discredit or disgrace you as an effective infantry soldier. We will emulate the Core RFMF Values of Will to win, Dedication to duty, Integrity, Teamwork, Courage, Family and Service before self that will define us for a lifetime. My trust in you is absolute, and you should trust that I will be there for you and have your back. This is not my Joint Force & my soldiers; this is our Joint Force and our soldiers. Together we will ensure that we will remain the best and to be the best in everything we do.



HQs JTFC ROLES AND FUNCTIONS, JTFC HQ Organization & Staff HQs Responsibilities, Abbreviations and Acronyms.

HEADQUARTER (HQ JTFC) JOINT TASK FORCE COMMAND

1. The HQ JTFC is established to support the CRFMF's intent, RFMF Strategic Plan 2022 – 2027 and other strategic policies. The formation of the RFMF HQ JTFC provides an environment for military commanders to act collectively, smoothly and swiftly in the event of a crisis. This can be made possible by having dedicated joint headquarters elements that are always at a high readiness level, to be deployed at short notice to conduct an operation or command a force deployed overseas.

2. The HQ JTFC is expected to increase the competency and operational capability of the RFMF. In general, the HQ JTFC is to anticipate and assist in any crisis affecting the security of Fiji in the shortest time possible. Hence, the HQ JTFC as a permanent command is to assist in info/int ops, conduct operational plans and train personnel to respond to any threats to Fiji's strategic interests. The HQ JTFC will constantly monitor all forms of threat, from the beginning, in order to react immediately on receiving the Initiating Directive (ID) from CRFMF. The chain of command structure of the HQ JTFC is as shown in hereunder to provide the flexibility and the intensity of a functional Joint Force Headquarters.

3. The Commander in this organization is the Commander Joint Force Command (CJTFC) who is entrusted to head all the divisions and staffs in the HQ JTFC. The HQ JTFC consists of two main components which are as follows:
 - a. **Operations Component.** Consists of the following divisions:
 - (1) Intelligence Cell (J2).
 - (2) Joint Operations and Training Cell(J3).
 - (3) Planning and Contingency Division (J5).
 - (4) Communications and Electronic Cell (J6). and
 - (5) Civil Military Affair Cell (J7).

b. **Support Component.** Consist of the following divisions:

- (1) Personnel Support Cell (J1),
- (2) Logistics Support Cell (J4), and
- (3) Military Medical Cell (J9),

ROLES AND FUNCTIONS OF THE JOINT TASK FORCE COMMAND HEADQUARTERS

INTRODUCTION

1. The HQ JTFC is a permanent organization of the RFMF and is responsible to conduct all forms of joint operations to-date. It has a permanent set of commanders, staff officers and personnel entrusted to carry out the various tasks of the headquarters. The Commander Joint Task Force Command (CJTFC) is directly answerable to the CRFMF for the execution of any given task or mission. The organization of the HQ JTFC is highlighted hereunder too for the ease of its coordination and functions.

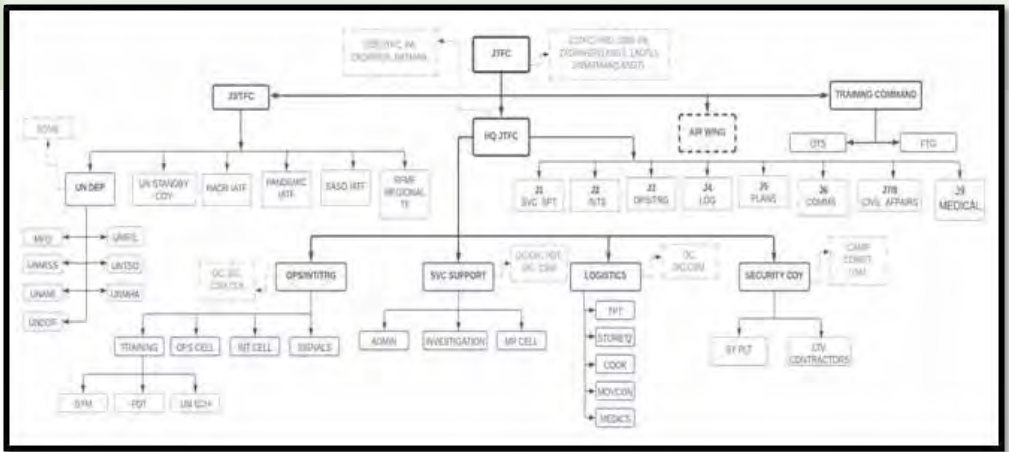
ROLES

2. The roles of the HQ JTFC are to:
 - a. Plan and execute operations locally, regionally and internationally through UN Peacekeeping, HADR, Pandemic, Counter Terrorism and any other additional tasks directed by CRFMF;
 - b. Plan and conduct intelligence operations;
 - c. Command, control and coordinate operations of assigned forces and to coordinate planning activities of those forces;
 - d. Control and coordinate logistics support within the Joint Force Command Area of Operation (JFC AO);
 - e. Coordinate tasks with other forces and agencies not assigned to the HQ;
 - f. Any other joint tasks directed by CRFMF through HQ RFMF.

FUNCTIONS

3. The functions of the HQ JTFC are as follows:
 - a. As an operational headquarters,
 - b. Plan and conduct Force Integration Training (FIT) for assigned forces,
 - c. Create situational awareness with respect to the nation's security,

- d. Review and revise Joint Standing Operating Procedure (SOP) accordingly,
 - e. Plan, execute and participate in all joint exercises,
 - f. Prepare, deploy and administer all military personnel serving in any UN Peace Support Operations (PSO).
 - g. Prepare, deploy and administer all military personnel operating in any HADR deployments locally and regionally.
 - h. Prepare, deploy and administer Counter-Terrorist capabilities.
 - i. Any other duties as instructed by the CRFMF through the HQ RFMF such as aid to civil authorities' operations including humanitarian and disaster relief, counter terrorism, public order and others.
4. Additionally, its secondary functions may include the following:
- a. To carry out FIT of the assigned forces for any conflict/war situation(s), and
 - b. To monitor our national Area of Interest (AI) e.g. South Pacific Region and national borders.



HQ JTFC Structure.

JOINT TASK FORCE STAFF HQs RESPONSIBILITIES

J1 - PERSONNEL

1. The personnel staff's principal role is to advise the JTFC and the Joint staff on personnel policies and manpower management systems and procedures established by national authorities for their force components. J1 staff's

responsibilities include personnel management, accounting, entitlements and benefits, Joint Personnel, morale, welfare, recreation, postal services, safety, provost and discipline, Prisoner of War (POW) administration and casualty reporting. The J1 staff should also coordinate personnel matters with the personnel staffs of the single services i.e Navy, LFC, TF BDE and national contingents.

J2 – INTELLIGENCE

2. The Intelligence Staff is responsible for the provision of timely intelligence to meet the JFC operational and security requirements within the JTFC Area of Intelligence Responsibility and maintaining situational awareness in the JTFC Area of Interest (AI).

J3 - OPERATIONS AND TRAINING

3. The essential role of the operations staff is to act as the focal point through which the JTFC directs the conduct of a joint operation, ensuring unity of effort and the most effective use of resources, supporting immediate and planned operations. The operations staff may comprise sections that cover maritime, land, air, special operations forces and space operations (when applicable) plus cells to cover Information Operations (IO) and targeting disciplines. The operations staff is responsible for:

- a. Assessing the status and capabilities of assigned forces, as a pre condition for the JFC decision on Course(s) of Action (COA) and the concept of operations;
- b. Recommending force organisations for planned operations;
- c. Advising the CJTFC in consultation with DALS (Legal Department, on applicable Rules of Engagement (ROE) and suggesting changes/additions that the JTFC may wish to consider;
- d. Specifying the tasks for force components based on JTFC Concept of Operations (JCOO);
- e. Coordinating the conduct of IO;
- f. Monitoring force components plans supporting the JTFC campaign and deployments be it locally, regionally or internationally;
- g. Producing and disseminating operation orders and Joint FRAGOs;
- h. Coordinating the activities of liaison officers appointed to the Joint Task Force;

- i. Coordinating Joint targeting activities as required;
- j. Planning, coordinating and executing joint integrated training for the forces at the appropriate levels; and
- k. Assisting the CJTFC in planning of joint exercises for the Joint Force.

J4 – LOGISTICS

4. The logistics staff is responsible for assessing the logistics support required for achievement of the JFC deployment objectives, and for ensuring that these support requirements are met throughout the deployments. Based on this assessment, the logistics staff develops the logistics concept and plans in support of the joint operations, and coordinates the overall logistics effort. The size and complexity of joint operations, component participation and force contribution of the nations as well as the degree to which national and/or multinational logistics are to be integrated into the logistics concept, may require specific logistics coordinating activities. If appropriate, a Bilateral or Multinational Joint Logistics Centre (MJLC), in support of the JTFC and JLC logistics staffs, may be activated to coordinate support between components, National Support Elements (NSE), the Host Nation (HN) and Non-Governmental Organisations (NGO) and contractors.

J5 - PLANNING AND CONTINGENCY

5. The Planning and Contingency staff assists the JTFC in the preparation of his campaign plan and the planning for future operations. They coordinate these planning efforts within the HQ JTFC and with higher, subordinate and adjacent commands and civil authorities. The Planning and Contingency staff will administer the following:

- a. Determine, on the basis of the intelligence assessments, the military conditions for successful accomplishment of the JTFC assigned mission objectives, including actions to be directed against the adversary's Centre of Gravity (COG) and that required to protect friendly COG.
- b. Develop COA by which the JTFC assigned mission objectives can be accomplished.
- c. Coordinate the JTFC IO planning by determining how weaknesses in the adversary's C² structure could be exploited in favor of the Joint force and what measures should be taken to protect friendly C² systems. Provide planning guidance for the execution of the phases of the campaign, with particular emphasis on synchronization of forces, time and area towards achievement of the campaign objectives.
- d. Promulgate the JTFC decisions on the COA for the campaign

- through planning directives and operation plans.
- e. Conduct Combat Assessment (CA) of operations as directed by the CJTFC.
- f. Plan, in consultation with the Civil - Military staff, for emergency and humanitarian assistance disaster relief (HADR) in accordance with present arrangement.

J6 - COMMUNICATIONS AND ELECTRONICS

6. The Communications and Electronics staff should ensure that adequate support is provided for Joint Operations, and that interoperable communications procedures are used at all levels in the Joint force.

J7/8 - CIVIL MILITARY AFFAIR

7. The minimum requirement for a Civil - Military Cooperation (CIMIC) capability is having a CIMIC staff at each level of HQ. Their role is to advise the commander, prepare and develop the CIMIC assessment and the CIMIC lines of activities in support of the commander's plan and to carry out liaison. As a result of assessments, existing military forces or specialized CIMIC assets might be tasked through the chain of command to carry out CIMIC activities. The size and structure of CIMIC staff will vary at each level of HQ and will be mission dependent.

Members of the staff do not require specialist skills applicable to the civilian environment, but they will be trained and experienced operational staff officers who also understand the workings of International Organizations' and NGOs. They will work closely with all staff branches to ensure that CIMIC factors are considered in all aspects of planning. They will have a particularly close relationship with J3 and J5 staff through which CIMIC activities, which will always support the main OPLAN, will be authorized.

J9 - MILITARY MEDICAL

8. The J9 normally works closely with J1/J3/J4 but has the direct access to the CTFC on any serious medical matters.

CONCLUSION

9. The various staff of the HQ JTFC plays a predominant role in ensuring that the JTFC's vision and mission statement is achievable and the goals set for the HQ JTFC are attainable. The CJTFC directives through CRFMF's intent underline the various tasks and responsibilities of the staff of the HQ JTFC.

JTFC VISION, MISSION, THEME, DIRECTIVES AND COMMAND INTENT FOR 2022/23 FY AND BEYOND

RFMF & JTFC VISION

RFMF VISION

THE PURSUIT OF OPERATIONAL EXCELLENCE.

JTFC VISION

“One team of God fearing, dedicated professionals, agile, well-structured that always ready to respond to call of duty and be an effective and robust
Joint Task Force Command for the RFMF”

JTFC MISSION and THEME

“JTFC is to effectively execute Joint Task Force Operations and Training for local, regional and international HADR/UN/SASO deployments IO for the RFMF to successfully achieve its mandated mission and constitutional role.”

JTFC THEME

“To effectively and efficiently postured for any contingency(s)”



Commander JTF Directives

My direction for the coming years will mainly focus on our “**capacity and capability transformations as a Joint Task Force**”, while continue to **improve on our basic military skills** and our overall **discipline**. These were and are still our major challenges of the RFMF and hopefully we as members of JTFC, will be able to manage it professionally so that we can set a high-standards for the RFMF as a whole, as we are proudly renowned for.



The **JTFC capacity and capability transformations** will spread out for the next 3-5 years with the support of our HQ RFMF, MODNS, and our Defense partners. Fortunately, the **Government of Australia through their Ministry of Defense (MOD) and the Australian Defense Force has made a huge investment of \$F100 million dollars to build a state-of-the-art HADR/UN Peacekeeping School at Blackrock**. Other Defense Partners are willing to add few infrastructures at Blackrock with additional capabilities to support JTFC peacekeeping, HADR, Pandemic, Counter-Terrorism commitments. After successive bilateral Defense talks with our Defense partners this year, which includes USPACOM, ADF, NZDF, IDF, JDF and both the Chinese and Indonesian Defense Forces, more support are expected to come our way in this fiscal year and the next 3-5 years for the development of our overall JTFC capacities and capabilities.

Moreover, while we are focusing on our transformations, it is extremely important for us to be aware of the political, economic, security and social events that are currently unfolding and evolving this year. **As your Commander joint Task Force Command**, I will continue to pay a particular attention to the general wellbeing of our people, through our well-planned and well executed **Operational Training**.

Therefore, it is extremely important that as members of JTFC, we are to be mentally, physically and spiritually prepared to react effectively to any contingency(s) that will be directed by our Fiji Government and CRFMF through

Strat HQs. **Our proactive/pre-emptive operational posture** is very critical in this instance including **our timely and effective assistance to the Fiji Police Force.** Situational awareness is always paramount in all phases of our operations be it from pre-ops, during-ops and post-ops.

The Joint Task Force Command **capacity transformations** will involve the following:

- **JTFC Structural Changes** to meet our constitutional role and our National Defense Policy Objectives which are:
 - **Protection of Sovereignty, independence and interests;**
 - **Maintain internal security in support of the Fiji Police Force;**
 - **Maintain the well-being of all Fijians;**
 - **Contribution to international Peace and Security; and**
 - **Credible integrated Security Approach.**
- Ensure the implementation of **Mission Command** or **Directive Control**;
- Continuous military courses and training with strict adherence to the processes of **Army Training System (ATS) which are Analyse, Design, Develop, Conduct and Validate**;
- Conduct of Table Top Exercises;
- Conduct of Joint or Combine Exercises with our Defense Partners to enhance our operational interoperability;
- Conduct of Leadership Seminars and Junior Officers/NCOs Development Programs;
- Conduct of Collective Training and Military Competitions;
- Conduct a Joint Task Force Exercises;
- Conduct of Specialist Courses to enhance JTFC capabilities;
- Participate in Government's and other organizations workshops, seminars and training;
- Support LFC/RFMF Wives and Mothers Programs;
- Conduct a standardized Cadet Training to all Schools; and
- Conduct of counseling, wellness, and mentorship programs to LFC soldiers, families, schools and other RFMF stakeholders.

The Joint Task Force Command **capability transformations** will involve the following:

- Provide a UN PSO/HADR Coy Gp (Mechanized Capability) for UN Standby arrangements and embedded with JTFC;
- Provide an **Air Wing (Rotary-wing capability)** in consultations with

one of our Defense Partners to support our HADR, SASO and Counter-Terrorist Operations in maritime and remote areas;

- Provide **Cyber Capabilities** and embedded with JTFC Signals Cell;
- Ensure strictly adherence to the **Army Training System (ATS)**;
- Provide a **Joint Task Force Amphibious Capability with ADF, NZDF and USDF**;
- Enhance **Blackrock Security capabilities** including the installation of CCTVs and improve JTFC Operation Cell to effectively manage our operations;
- Enhance **Intelligence, Surveillance, Reconnaissance (ISR)** capabilities;
- Provide an **EOD capability** to mitigate IED and VBIED threats at APODs / SPODs and UN PSO;
- Maintain a **Platoon size Unarmed Combat Team** to act as a **Counter-Terrorist Platoon**;
- Provide **Combat Medics and Field Hospital Capabilities**;
- Provide **mobility capabilities** for JTFC/RFMF Units;
- Provide **Military Police Capabilities** to effectively detect illicit drugs users within and outside JTFC; and
- Provide an effective integrated LOGISTICS systems and capabilities.

Blackrock Operating Concept Line of Efforts

It is on this recognition that the RFMF has set its vision to become a premier climate force not just for Fiji but for the region and internationally. Our Blackrock Training concept is based along the parallel running of the under-mentioned three lines of effort.

- **Line of Effort 1: UN PKO Training** that is responsible for the current RFMF UN deployment arrangements to UN PKO;
- **Line of Effort 2: Rapid Response Group** – which establishes the RFMFs response capability to an all-Hazards approach scenario. It also is placed on a very high level of readiness acting as a UN Standby arrangement force, HADR response role, and Rapid Response capability for any immediate contingency. Readiness process is as below;



Line of Effort 3: Climate change awareness capability – This is aimed at dealing with integrating our peacekeeping & HADR capability to promote environmentally friendly outcomes and help build resilient communities in the various RFMF Operating Environments both whilst on UN PKO or HADR missions locally and abroad.

Whilst the first and second lines of effort are normal concepts in any military establishment, the third line of effort is an attempt of introducing a multi-sectoral approach towards increasing the level of training and awareness by bringing together to collaborate with government, local and international NGOs, Defense partners, Regional states, CSOs, Private sector and our very own local governments and communities on the issue of developing capacity to raise the awareness for Disaster Risk Reduction and build resilient communities.



CJTFC INTENT 2022/23 FY AND BEYOND

Purpose

Joint Task Force Command is postured as a skilled, knowledgeable and capable joint force being able to provide an environment of peace, safety, security and wellbeing for Fiji and all Fijians, her people and interests.

Method

Commanders and Joint Staff Officers at all levels must exercise a 'hands-on approach' at all times in all situations with a positive and healthy mindset. Our focus will be guided by the following specified tasks:

- **Honor and fear God Almighty;**
- **Maintain a credible and a robust Joint Task Force Command;**
- **Defend, secure and protect Fiji's sovereignty and her interests;**
- **Support regional and international Peace Support Operations;**
- **Support HADR and Nation Building;**
- **BP to conduct proactive and pre-emptive Security and Stability Operations;**
- **Timely and effective assistance to the Fiji Police Force.;**
- **Support Fiji Government's and RFMF's Climate Change HADR programs;**
- **Support JTFC "Capacity and Capability Transformation Plan";**
- **Provide assistance to Youths and any School Cadet Programs;**
- **Conduct Military Courses, Training, Seminars and Workshops;**
- **Implement Mission Command or Directive Control;**
- **Conduct Public Relations (PR) or outreach programs to communities, societies and other social engagements;**
- **Conduct counseling, wellness, and mentorship programs to JTFC soldiers, families, schools and other RFMF stakeholders;**
- **Provide effective management, administration and logistic support;**
- **Maintain a high standard of discipline;**
- **Conduct bi-annual RFL/BE and BMI Tests;**
- Provide fully accredited HADR and UN Training Center, where our efforts is seeking a strong partnership with UN DPKO in the provision of the necessary accreditation by way of training, training validation and use Blackrock to host Trainer of Trainers rollout of new and revised training material
- Introduce at Blackrock a multi-sectoral capacity development program

that raises the level of training and awareness by bringing together to collaborate with government, local and international NGOs, Defence partners, Regional states, CSOs, Private sector and our very own local governments and communities on the issue of developing capacity to raise the awareness for Disaster Risk Reduction and build resilient communities.

- Provide a UN Standby Company arrangement as part of the RFMF effort to meet Fiji Government's pledges at the UN HQs in New York through its UN Peacekeeping Capability Readiness System (UN PCRS). Raise our current status of our UN Standby Company from level 1 to level 4. JTFC notes the critical need in deploying under a robust peacekeeping concept that necessitates deploying on a self sustainment capability. On that note, the JTFC through HQ RFMF intends to pursue our options with our Defence partners for the purchase of armored mobility assets, EOD capability, level 1+ medical capability and quality PPEs to have better prepared and equipped force elements that can meet the robust requirements in today's peacekeeping environment.
- The JTFC through HQ RFMF has the potential of increasing its armored mobility assets for a coy lift. The recent procurement of the 10 Bushmaster PMVs has been paid off with the annual reimbursements of \$4.7 million per year since 2018. The availability of this reimbursements from UN for the 5 Bushmasters in the Goan Heights with UNDOF presents such an opportunity to raise our PCRS level from 1 to 4 with further procurements of these additional PMVs.
- **BPT undertake any other tasking(s) that may be directed by HQ RFMF.**

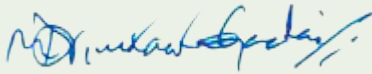
Endstate

JTFC successfully mitigated all threats and also successfully achieved all operational, training, logistics and administrative requirements. Basic military skills within all sectors are greatly improved with effective capacity and capabilities transformations. The RFMF and the Nations' sovereignty, interests and integrity are well secured and protected by LFC and all Fijians continue to enjoy the Nations' peace, stability and prosperity.

CONCLUSION

To conclude, I expect everyone to take ownership of my Command Philosophy and Intent for this fiscal year and beyond. Remember that our OATH to serve our country does not imply that we enjoy normal luxuries of life. In contrast, it includes God fearing, dedication to duty, commitment, teamwork, respect, loyalty, and selfless sacrifice.

Vina valevu and may God Almighty continues shower his grace and blessings to all of us.



M.D.GADAI
Brigadier General
Commander Joint Task Force Command

2nd of August, 2022



ABBREVIATIONS AND ACRONYMS

| | | |
|----------------|---|--|
| AI | - | Area of Interest |
| AO | - | Area of Operations |
| C ² | - | Command and Control |
| CA | - | Combat Assessment |
| CRFMF | - | Commander Republic of Fiji Military Forces |
| CJTFC | - | Commander Joint Task Force Command |
| CIS | - | Communications and Information Systems |
| COA | - | Course of Action |
| COG | - | Centre of Gravity |
| COS | - | Chief of Staff |
| CPX | - | Command Post Exercise |
| CIMIC | - | Civil Military Cooperation |
| EW | - | Electronic Warfare |
| FIT | - | Force Integration Training |
| ID | - | Initiating Directive |
| ILS | - | Integrated Logistics Support |
| IO | - | Information Operations |
| JCC | - | Joint Chiefs Committee |
| JFAO | - | Joint Force Area of Operations |
| JTFC | - | Joint Task Force Commander |
| HQ JTFC | - | Joint Task Force Command Headquarters |
| COS JTFC | - | Chief of Staff Joint Task Force Command |
| LOC | - | Line of Communication |
| HQ RFMF | - | Headquarter Republic of Fiji Military Forces |
| MJLC | - | Multinational Joint Logistics Centre |
| MLC | - | Minimum Level of Capability |
| NATO | - | North Atlantic Treaty Organisation |
| NDP | - | National Defence Policy |
| NGO | - | Non-Governmental Organisation |
| OLOC | - | Operational Level of Capability |
| OPLAN | - | Operation Plan |
| POW | - | Prisoner of War |
| PSYOP | - | Psychological Operations |
| SOP | - | Standing Operating Procedure |

